



ΠΑΝΕΠΙΣΤΗΜΙΟ
ΔΥΤΙΚΗΣ ΑΤΤΙΚΗΣ
UNIVERSITY OF WEST ATTICA

University of West Attica Overview

Theodoros Xanthos MD, Pg Dip (Ed), MSc, MRes, PhD, FHEA, FAcadMed, FERC, FCP, ERT, FESC, FRSM

Professor Physiology/Pathophysiology

School of Health Sciences

Vice Rector of International Affairs & Extroversion

University of West Attica

President Hellenic Society of Cardiopulmonary Resuscitation

<https://scholar.google.gr/citations?user=Hr6SIXgAAAAJ&hl=el>

<https://pubmed.ncbi.nlm.nih.gov/?term=xanthos+t>

<https://uniwa.academia.edu/TheodorosXanthos>



Table of Contents

1. Schools – Departments
2. Programs of Studies
3. Students
4. Graduates
5. Teaching staff
6. Faculty ratio
7. Material and technical infrastructure
8. ESGs standards overview



6 Schools



SCHOOL OF
PUBLIC
HEALTH



SCHOOL OF
HEALTH
AND CARE
SCIENCES



SCHOOL OF
ADMINISTRATIVE,
ECONOMICS AND
SOCIAL SCIENCES



SCHOOL OF
APPLIED ARTS
& CULTURE



SCHOOL
OF FOOD
SCIENCES



SCHOOL OF
ENGINEERING



The 3rd Largest University of the country

27

Departments



79

Research laboratories



237

Research programs



24

BSc Degrees



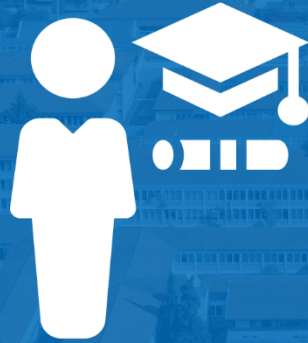


Active Students



54060

Undergraduate
students



3857

Postgraduates
Students



798

Doctoral
candidates



48

Post Doctoral

Undergraduate students

Department	Number of newly registered students in the 1st year	Number of students enrolled in semesters (n)	Number of students enrolled in regular semesters and $\leq n+4$	Number of students enrolled in semesters $> n+4$
Department of Archival, Library and Information Studies	130	515	168	294
Department of Business Administration	450	1787	828	2820
Department of Tourism Management	408	1508	464	1096
Department of Social Work	197	643	94	181
Department of Accounting and Finance	271	968	439	2372
Department of Early Childhood Care and Education	183	560	101	123
Department of Electrical and Electronic Engineering	236	1546	1002	4246
Department of Biomedical Engineering	117	508	235	330
Department of Industrial Design and Production Engineering	299	1468	523	2145
Department of Informatics and Computer Engineering	321	1390	831	1605
Department of Surveying and Geoinformatics Engineering	106	467	184	276
Department of Mechanical Engineering	178	946	511	1967
Department of Naval Architecture	110	480	189	340
Department of Civil Engineering	224	1065	507	1351
Department of Graphic Design and Visual Communication	115	742	272	664
Department of Interior Architecture	166	524	220	384
Department of Conservation of Antiquities and Works of Art	79	310	109	203
Department of Photography and Audiovisual Arts	137	488	176	441
Department of Food Science and Technology	114	517	232	631
Department of Wine, Vine and Beverage Sciences	55	403	223	485
Department of Biomedical Sciences	422	1409	470	845
Department of Occupational Therapy	169	537	36	124
Department of Midwifery	163	576	147	171
Department of Nursing	287	875	148	307
Department of Physiotherapy	207	732	117	228
Department of Public and Community Health	176	730	158	353
Department of Public Health Policies	0	0	0	0



Alumni

Year 2022-2023 data



4267

Undergraduate
Students

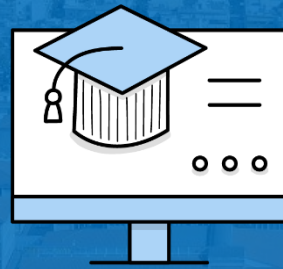


1927

Postgraduates
Students

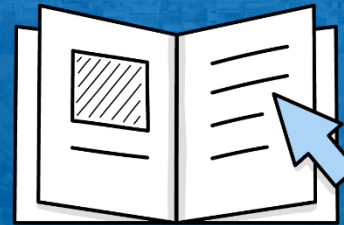
Staff

Year 2021-2022 data



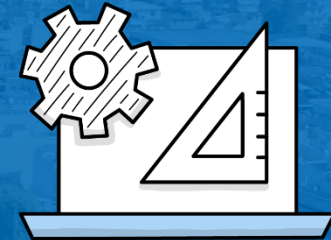
615

Faculty



346

Administrative
Staff



181

Laboratory Teaching Staff -
Specialist Technical Laboratory
Staff

139 Academic Fellows

90 Doctorate Students with full remuneration



Ratio Faculty to Students 2022-2023



46,86

Ratio of students to
instructors

Ratio is much lower for labs
Approximately 15 students per group per instructor



9,18

Average annual number
of Faculty members for
undergraduate Program
of Studies



Quality indicators 2022 - 2023

Δ1.4.44-211	Annual percentage of graduates with a degree grade of 8 or higher	18,77%
Δ1.4.44-211	Annual Average Degree Grade	7,21



Research Action 2022 - 2023

Δ1.011-211	Average annual number of Doctoral Candidates per Teaching Research Staff member at University level	Average number of Doctoral Candidates in relation to the number of Teaching Research Staff members (Professors, Associate Professors, Assistant Professors).	631/756
Δ1.118	Average number of papers published in peer-reviewed Scopus journals per member of the University (5 years)	Average number of papers published by members of the University in peer-reviewed scientific journals and conference proceedings according to the international Scopus database for the last 5 years including the calendar year of the reference year (Teaching Research Staff members, Specialist scientific staff members, Specialist teaching staff members, Specialist technical staff members, scientific collaborators/assistants).	4,51
Δ1.122	Average number of Scopus citations per member of the University (5 years)	The total number of Scopus citations for the last 5 years including the calendar year of reference for all members of the University (Teaching Research Staff members, Specialist scientific staff members, Specialist teaching staff members, Specialist technical staff members, scientific collaborators/assistants).	19,69

Hardware Infrastructure



35 buildings with a total
area of 108.372,50
square meters



Teaching
Rooms



Laboratories

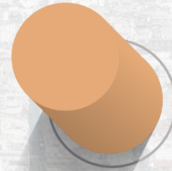


3 conference
centres



Students Facilities 2022-2023

3 restaurants
5.700
students
per day



Feeding



Medical
Services



Student's
Advocate



Accommodation



Psychological
Support
Services



3 associated student centres
389 students hosted

Housing allowance granted to
2523 students out of the
3621 who applied

437 visits

92 students



Student's facilities

Consultancy services

Providing employment and career counselling services to students and graduates of University of West Attica.



Erasmus Office



Academic Advisors

One from each Department, faculty members of the University providing support and guidance on education and career issues and inform those interested about developments in the scientific and professional field as well as undergraduate and postgraduate programmes in Greece and abroad



Liaison and Innovation Office - Internship Office

Student's facilities



Medical services

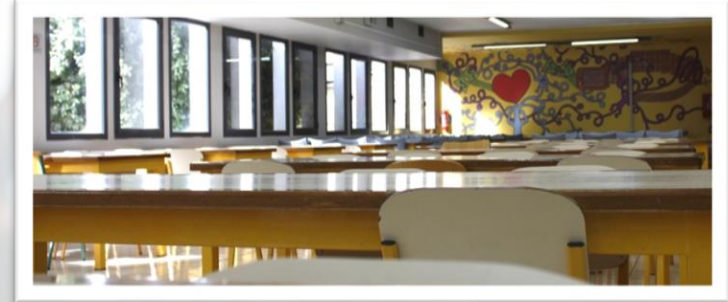
- 2 organized clinics (Ancient Elaionas and Aigaleo Park Campus)
- Proprietary medical equipment (ultrasound scanner, gynaecological bed, ophthalmological instruments),
- Provision of secondary care
- Ophthalmic examinations
- Gynaecological examinations for students and staff of the University
- Ultrasound scans, TRIPLEX of vessels and heart

Over 1,000
patients per year



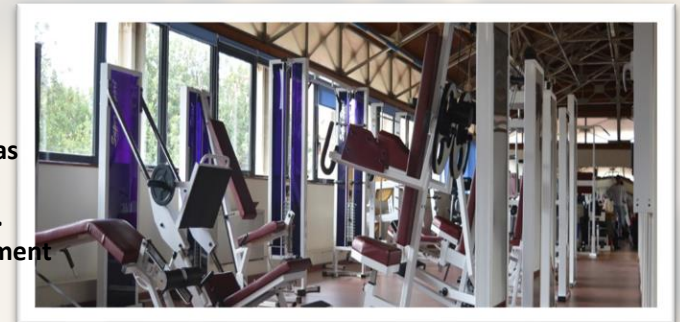
Restaurants & Cafeterias

- 8 canteens – cafeterias
- 2 restaurants (Ancient Elaionas and Aigaleo Park Campus)
- Catering services are also provided by the restaurant on Crete 10 in Vathis Square
- Separate restaurant area for Professors and Guest Social - Academic Partners



Fitness centers

- 2 gyms (Aigaleo Park and Ancient Eleonas Campus)
- Open daily except Saturday and Sunday.
- Areas fully equipped with fitness equipment
- Specialized Staff





Student's facilities



Study and
computer rooms



Three
Libraries



Student's facilities

Sports - Culture

Apart from the gym facilities, the University of West Attica offers its students a wide range of sports activities, tailored to their different needs and interests.

For the coordination of all sports activities implemented in our University, **the Department of Sports** was established, which organizes a variety of group sports programs, as well as **Interdepartmental Internal Championships**.

In addition, members of the academic community have received National and International awards:

- **Basketball** (A1 Women's Division)
- **Volleyball & Beach Volley** (Women's A1 category)
- **Water Polo** (A1 Men's category - 2 students with distinctions in world championships)
- **TaeKWonDo** (Student 9th in the World Ranking)



Basketball



Chest



Volleyball



Tableware Tennis



Football



Water polo



ΠΑΝΕΠΙΣΤΗΜΙΟ
ΔΥΤΙΚΗΣ ΑΤΤΙΚΗΣ
UNIVERSITY OF WEST ATTICA

1000

patients / year

Provision of primary health
care services to students

45

patients/ year

Referral and transfer of urgent medical
cases to hospital departments on duty

260

total exams

Ultrasound Department

Medical Services

Gynaecological
Urological
Dermatology
examinations

University of West Attica Overview



Policy for Quality Assurance

Department and school autonomy

- Each Department has its own webpage for quality assurance
- Is a part of their strategic management in alignment with the strategic plan of the University and LO are fully aligned to the framework
- Involvement of external stakeholders published on the departments' webpages
- Culture of continuous improvement
- Overarching aims of the programs aligned with learning outcomes
- Students input is taken into account
- Student progression is monitored
- ECTS are centrally regulated, and the department implements
- Each curriculum change is communicated and approved centrally
- Cyclical Formal and Informal Evaluations

[University of West Attica – Quality Policy Statement](#)



Policy for Quality Assurance

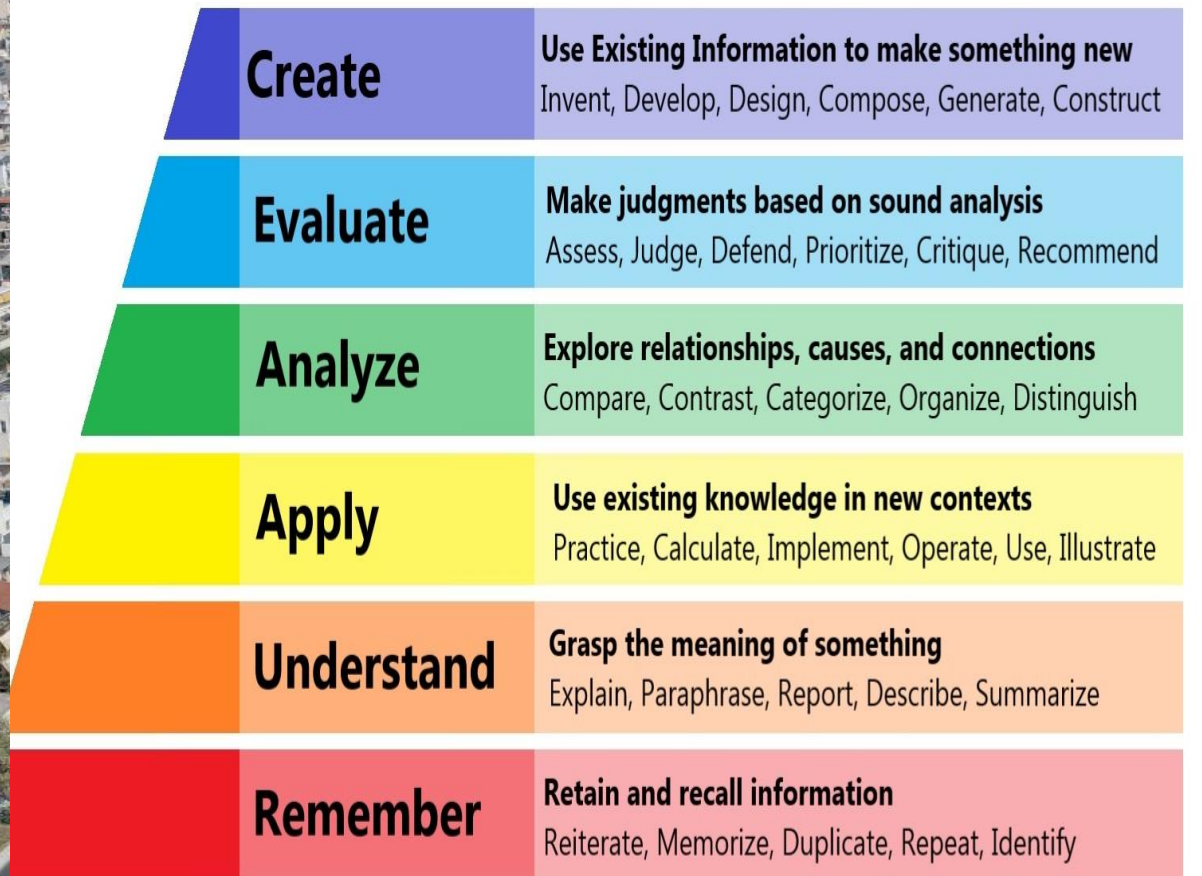
The basic directions of the University of West Attica constitute the core of the Strategic Planning of the University and are as follows:

- 1.Excellence in Education**
- 2.Promotion of research**
- 4.Digital Transformation**
- 5.Improving the Academic Environment**
- 6.Strengthening the Innovation and Transparency**
- 7.Externalisation-Internationalisation**
- 7.Sustainability and Sustainable Resource Management**
- 8.Quality Assurance**

The Strategic Objectives of the University of West Attica (UNIWA) are fully aligned with the Strategic Directions - Pillars of the University

Policy for Quality Assurance

BLOOM'S TAXONOMY



The Knowledge Dimension	The Cognitive Process Dimension					
	Remember	Understand	Apply	Analyze	Evaluate	Create
Factual Knowledge						
Conceptual Knowledge						
Procedural Knowledge						
Meta-Cognitive Knowledge						

Design and approval of programs

Procedure for the approval of a postgraduate program of study:

- The proposal for the establishment of a Master's degree is initially approved by the departmental assembly and then administrative output
- Once approved, it must be approved by the University Senate
- The approved program recommendation, together with the necessary supporting documents, is forwarded to the National Authority for Higher Education and notified to the Ministry of Education
- The program must be accredited by the National Authority for Higher Education before it can start the intake of students

[Guidelines for designing study programmes \(Law 4957/2022, articles 79,80,81,82\)](#)
[Internship regulation \(Law 4957/2022, article 69\)](#), [Diploma supplement](#)

Student-centered learning

Basic Principles of Student-Centered Learning



Continuous reflexive process

Different learning styles

Different needs

Student Central role

Different experiences and knowledge

Student Control of learning

Engagement of the student

Cooperative teaching methods



Student centered Learning

Pedagogical Methods



❖ **Brainstorming**

❖ **Simulation– (Role play)**

❖ **Think- Pair- Share (TPS)**

❖ **Projects**

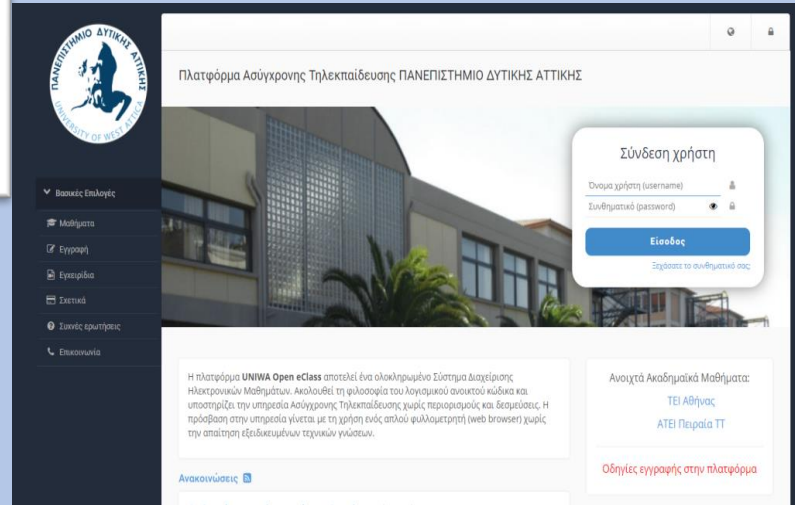
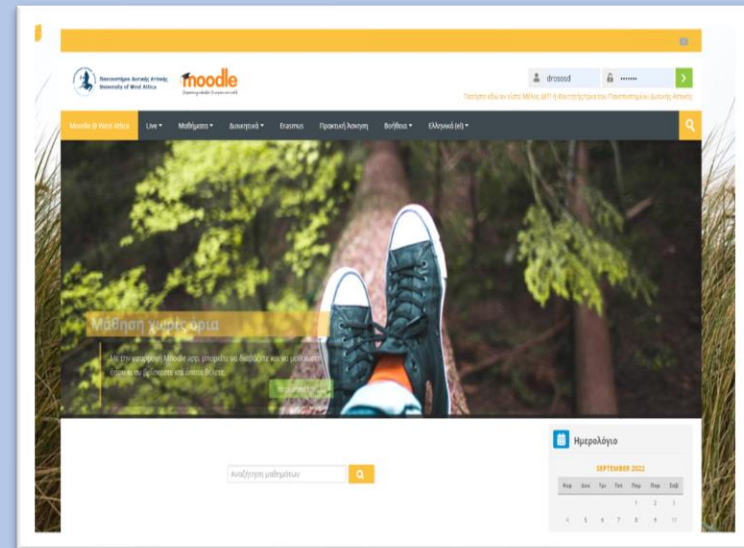
❖ **Cooperative Learning**

❖ **Collaborative Learning**

❖ **Field Visits**

Student centered Learning

Electronic Platforms for Asynchronous Teaching



Student centered Learning

Modes of delivery

The Proposed Programs utilize a range of different teaching methods depending on the nature and subject matter of each course. These Methods are mainly focused on Modern, Face to Face, Teaching and Asynchronous Distance Learning.



Lectures by Professors



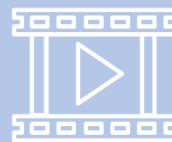
Presentations by Distinguished Scientists



Individual and group exercises



Group discussions



Video Presentation & Analysis



Practical Exercises



Scenario Development & Analysis



Analysis Case Studies

Student centered Learning

Student Performance Evaluation



The criteria for the final examinations are announced at the beginning of the semester.



The duration of the examinations is determined by the University.



The examination regulations define the examination procedure, the obligations and rights of students, lecturers and invigilators Law 4957/2021.

Student centered Learning

Student Performance Evaluation Procedure



After the end of the teaching period of the winter or spring semester for the courses

Duration of the examination period
2 weeks

The examination regulations define the examination procedure, the obligations and rights of students, lecturers and invigilators. General responsibility lies with the Program Director.

Student centered Learning

Student Performance Evaluation



- **More than one evaluation method**
- **Intermediate progress, targeted tasks and self-assessment exercises**
- **The examination process (progress/exercises/final) is carried out by all instructors.**
- **Registration of marks**
- **The right to review for improvement of marks is given**
- **Examination papers are kept**

Study and examination regulations ([Law 4957/2022, article 65](#), [Internal Regulations of the University of West Attica, articles 35 ,26,27,28](#))

Student centered Learning

PROSVASIS : Supporting social care interventions for students



- It concerns students with disabilities/special educational needs, from Vulnerable Social Groups and students from Low Income Groups.
- It provides a wide range of services, as well as financial aid scholarships linked to progression in studies.



Student Progression

- New students support
- Student Information
- Monitoring Student Progress
- Classical - International - Internal Erasmus+ Mobility
- Attendance
- Implementation of the Credit Transfer System
- Quality Standards for Degree Thesis
- Practical Training
- Regulations of the Teacher Adviser for Students with Special Needs
- Diploma Supplement Form

Teaching Staff

- Teaching & Faculty
- Procedures and criteria for the selection of faculty
- Regulations or employment contracts, obligations of faculty
- Mobility – Externalization
- Policy on prevention, support and staff development
- Performance of faculty in scientific and teaching work, including on the basis of internationally recognized evaluation systems for scientists (e.g. Google Scholar, Scopus, etc.)

Staff recruitment policy ([Law 4957/2022, Chapter IZ](#))



Infrastructure and services of the University

- Availability and accessibility of resources
- Buildings – Classrooms
- Laboratories
- Secretariat
- Faculty offices
- Libraries - Study rooms and computer rooms

Learning Resources & Student Support



Ways of ensuring, Maintenance of equipment, buildings and related utilities, transport etc.



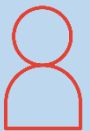
Spot checks by the Maintenance Department on common areas and power substations and report them to the Technical Department



Electronic request management platform through which staff report problems to the Technical Service



Requests and reports from the individual services under their responsibility (e.g. Network Management Centre for voice and data networks, Technical Service for cooling/heating systems, etc.)



Inspection by a Security Technician

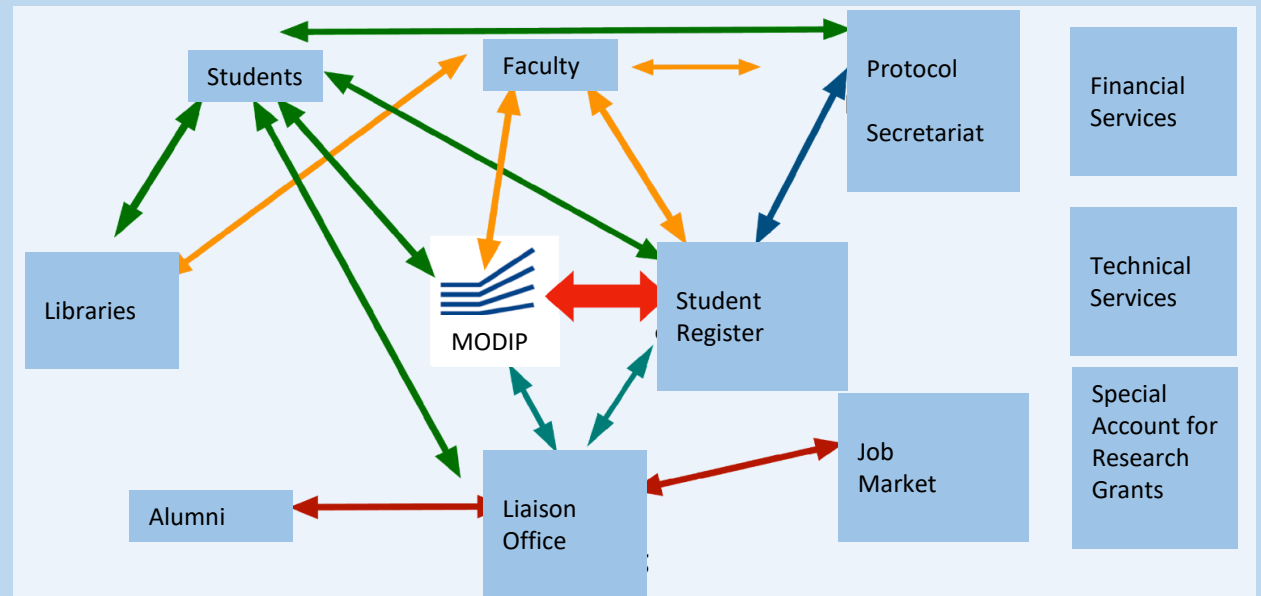


Information Management

The University has an integrated information system which consists of applications :

- Student Management
- Student Web
- Faculty Web
- Staff Management
- Payroll
- Liaison Office
- MODIP
- Finance
- Asset Management
- Budget
- Procurement
- Electronic Protocol
- Financial management of E.L.K.E

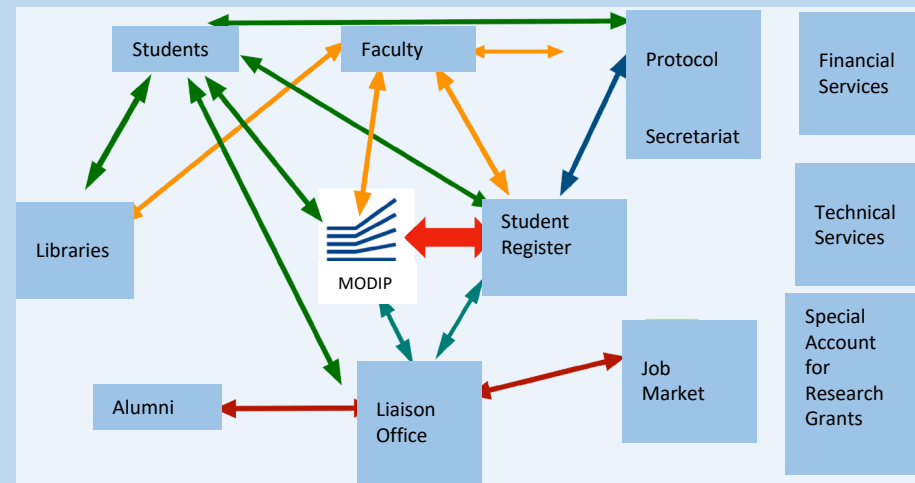
Operation of an information system for the collection of administrative data on the implementation of the curriculum (student register)



Information Management

Operation of an information system for the collection of administrative data on the implementation of the curriculum (student register)

Student Management Application - "UniTron Student Register"



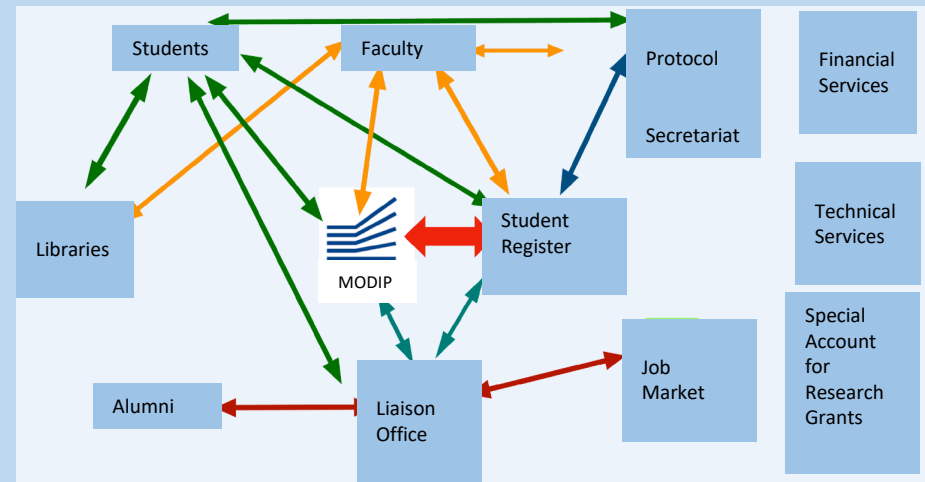
1/3 Student Management Application - "UniTron Student Register"

- Students, management of course registrations, grades, degree calculation, issuing certificates, etc.
- Lecturers, management of teaching - course grades.
- Management of curricula, examination schedules, etc.
- Printing static reports and certificates for students and courses.
- Parametric settings.

Information Management

Operation of an information system for the collection of administrative data on the implementation of the curriculum (student register)

Student Management Application - "UniTron Student Register"



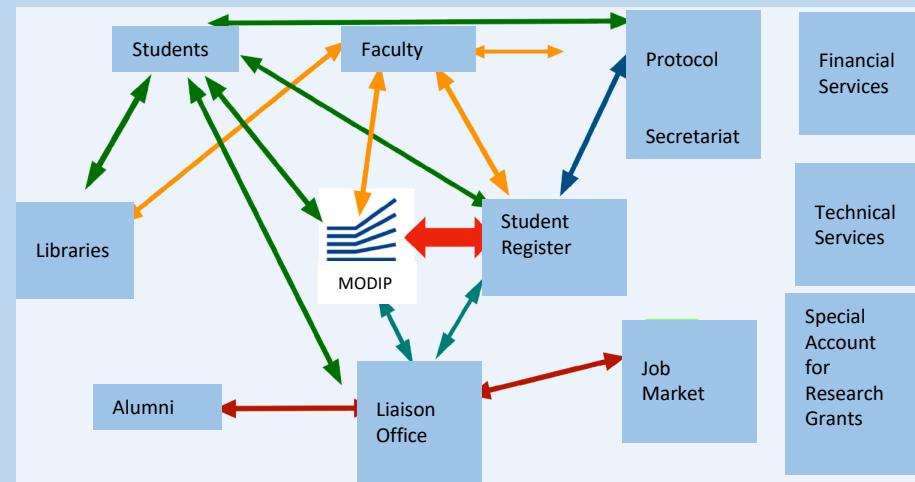
2/3 Interface "UniTron Student Register" with:

- electronic protocol,
- web application (student service),
- web application for faculty,
- MODIP,
- external applications (e.g. Academic Identity, EYDOXOS, etc.)

Information Management

Operation of an information system for the collection of administrative data on the implementation of the curriculum (student register)

Student Management Application - "UniTron Student Register"



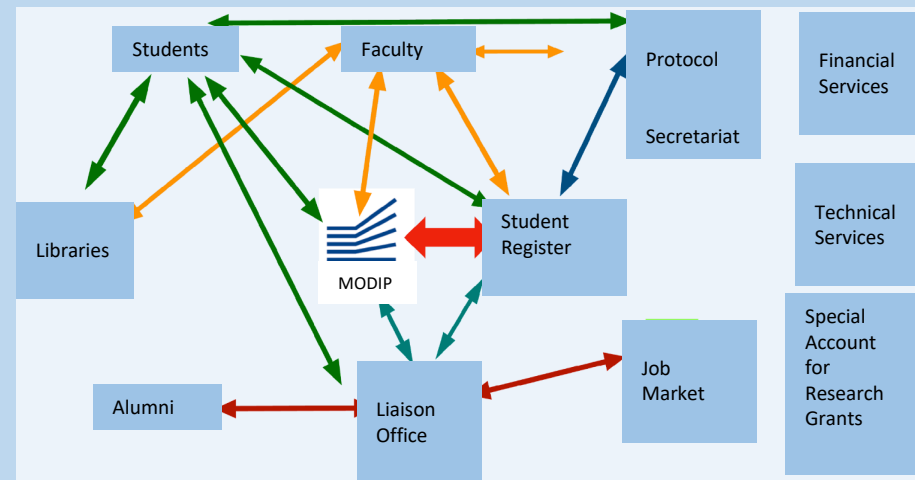
3/3 Student web application:

- Course declaration.
- Monitoring of their grades.
- Requesting and receiving certificates.

Information Management

Other tools and procedures designed to collect data on the academic and administrative functioning of the academic unit and the curriculum

Faculty web application



- Supervision of students by course.
- Management - allocation of students to monitoring groups,
- Submission of grades on predetermined dates by the Department Secretariat.

Information Management

Other tools and procedures designed to collect data on the academic and administrative functioning of the academic unit and the curriculum

Electronic tools developed internally in the University



Request management platform for Technical Service:
<http://dtech.uniwa.gr/>



Electronic Classroom Platform
<http://classschedule.uniwa.gr/>



Application of administrative leave :
<http://adeia.uniwa.gr/>



Electronic Portal for Administrative Services:
<https://admin.services.uniwa.gr/>

Public Information

- **Advanced Aesthetics and Cosmetic Science: Development-Quality Control and Safety of new cosmetic products**
 - Website: <https://msc-aesthcosm.uniwa.gr/en/homepage/>
 - **Advanced Product Design Engineering and Manufacturing**
 - Website: <https://aims.uniwa.gr/>
 - **Artificial Intelligence and Deep Learning**
 - Website: <https://aidl.uniwa.gr/>
 - Facebook: <https://www.facebook.com/AIDL.UNIWA>
 - LinkedIn: <https://www.linkedin.com/company/msc-artificial-intelligence-and-deep-learning-uniwa/>
 - Twitter: https://twitter.com/mscaidl_uniwa?s=11&t=p3wdQp-M7A4M9HQKYYKjkw
 - Video from study in Greece: <https://youtu.be/UIVuxlml4II>
 - Video from student project: https://www.youtube.com/watch?v=k-Zx_XUYFfw
 - **Biomedical Engineering and Technology**
 - Website: <https://bmet.uniwa.gr/>
 - Facebook: <https://www.facebook.com/profile.php?id=100088482687355>
- Βίντεο παρουσιάσεις:
- 3-min presentation of the program (EN): <https://www.youtube.com/watch?v=m2QNrM13i5o>
 - 10-min presentation of the program (EN): https://www.youtube.com/watch?v=fXjQAUWQ_J4
 - Interview with the coordinator of the program (GR): <https://youtu.be/pFeOUaSoZJ4?feature=shared>
 - Studyinggreece virtual fair 2023 (EN): <https://studyinggreece.edu.gr/events/sig-virtual-fair-2023/>

- **Circular Economy and Sustainability Strategies**
 - Website: msc-circular.uniwa.gr/
 - Facebook: <https://www.facebook.com/msccirculareconomy>
 - LinkedIn: <https://www.linkedin.com/company/msc-circular-economy-and-sustainability-strategies/?viewAsMember=true>
 - Instagram https://www.instagram.com/msc_circulareconomy/
 - Youtube: https://www.youtube.com/channel/UCt2MR_3QdoONs8sKtSpn6lg
- **Environmental Communication and Health Promotion**
 - Website: <https://pch.uniwa.gr/en/homepage/>
- **Environmental health and communication in general education and training**
 - Website: <https://pchenvihealth.uniwa.gr/>
- **MSc by Research in Electrical and Electronics Engineering**
 - Website: <https://mres.eee.uniwa.gr>
- **Sustainable Energy Systems**
 - Website: <https://mscscs.uniwa.gr/>
 - Facebook: <https://www.facebook.com/people/MSc-in-Sustainable-Energy-Systems-UNIWA/100094866293679/>
 - LinkedIn: <https://www.linkedin.com/company/98369570/admin/feed/posts/>
 - Youtube: <https://www.youtube.com/user/TheSEALAB15>

On going monitoring and review



**Recording the results of
the self-evaluation**



**Submission to
the University's
MODIP**



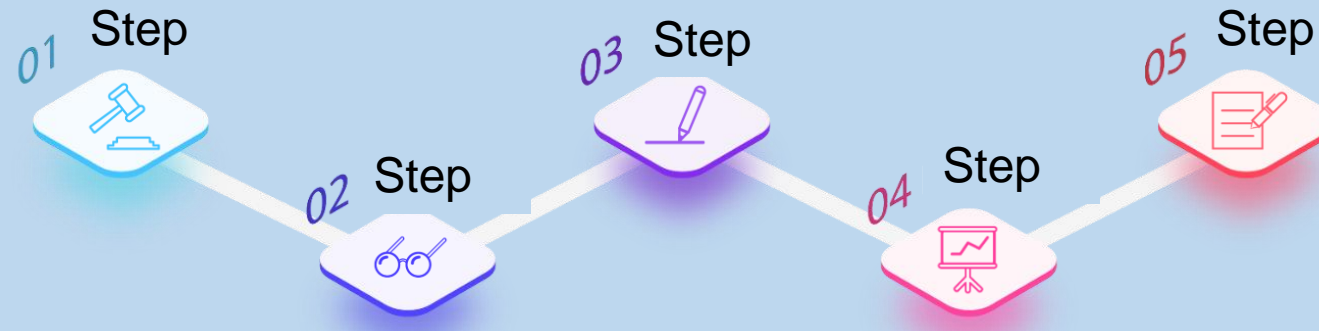
**The Findings of the
self-assessment**

The curriculum self-evaluation process



**Feedback from external
stakeholders**

Cyclical External Quality Assurance



Commitment to comply with the recommendations of the Hellenic Authority for Higher Education /External Stakeholders

Study of the Certification Report

Development of an Action Plan

Monitoring actions

Compilation of the Postgraduate Studies Monitoring Report



ΠΑΝΕΠΙΣΤΗΜΙΟ
ΔΥΤΙΚΗΣ ΑΤΤΙΚΗΣ
UNIVERSITY OF WEST ATTICA

Thank you for your attention

**Theodoros Xanthos MD, Pg Dip (Ed), MSc, MRes, PhD, FHEA, FAcadMEd,
FERC, FCP, ERT, FESC, FRSM
Professor Physiology/Pathophysiology
School of Health Sciences
Vice Rector of International Affairs & Extroversion
University of West Attica
President Hellenic Society of Cardiopulmonary Resuscitation**